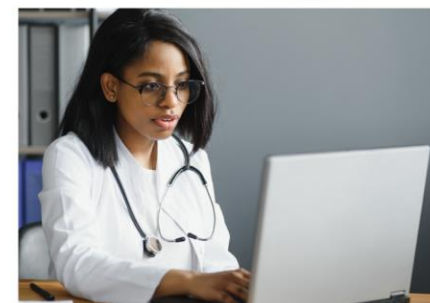


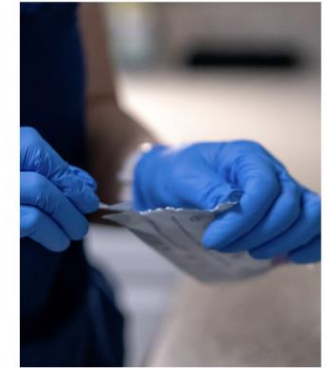
# Healthcare Resources

View All  
Healthcare Resources



## Women's Health, Prenatal Care, & OBGYN

Referral	Address	Contact Info	Services
Franklin County			
<b>Southeast Healthcare</b> (Medicaid Assistance)	<p>Southeast Healthcare Office Walk-ins at 8am Monday-Friday <a href="#">16 West Long St. Columbus, OH 43215</a></p> <p>Columbus Public Health, Resource Room Walk-ins on Mondays and Wednesdays <a href="#">240 Parsons Ave. Columbus, OH 43215</a></p> <p>(Interpretation Available)</p>	<p>Southeast Office Number: 614.225.0990 Ext.1155 Text Only: 614.394.4138 <a href="#">getcoveredohio.org</a> Email: <a href="mailto:jodi.tully@southeastinc.com">jodi.tully@southeastinc.com</a></p>	In-person application assistance for Medicaid Insurance or questions regarding your case. Call/email to set an appointment. Can give Presumptive Eligibility number to take to medical appointment.
<b>Columbus Public Health (CPH) Department — Sexual Health Clinic &amp; Vaccine Clinic</b>	<p><a href="#">240 Parsons Ave. Columbus, OH 43215</a> 1st and 2nd floors</p>	<p>614.645.7772 <a href="https://columbus.gov/Services/Public-Health/Find-Healthcare-Resources/Sexual-Health-and-Wellness-Center">columbus.gov/Services/Public-Health/Find-Healthcare-Resources/Sexual-Health-and-Wellness-Center</a></p>	Vaccinations for children and adults. STD testing and treatment. Accepts Medicaid, most insurance options, and Self-Pay (Payments may be made by cash or credit card)
<b>Grant Outpatient Clinic</b>	<p><a href="#">393 East Town St. Suite 116 Columbus, OH 43215</a></p>	<p>614.566.9108</p>	Accepts Medicaid and most major insurance plans. Provides healthcare regardless of ability to pay, a sliding fee scale based on income and number of dependents.
<b>Heart of Ohio Family Health</b>	<p>See web site for locations.</p>	<p>614.235.5555 <a href="https://www.heartofohiofamilyhealth.org">https://www.heartofohiofamilyhealth.org</a></p>	Accepts Medicaid and most major insurance plans. Provides healthcare regardless of ability to pay, a sliding fee scale based on income and number of dependents; OBGYN offered in several locations.
<b>Riverside OBGYN Community Care</b>	<p><a href="#">3535 Olentangy River Rd. Columbus, OH 43214</a></p>	<p>614.566.5757</p>	Accepts Medicaid and most major insurance plans. Provides healthcare regardless of ability to pay, a sliding fee scale based on income and number of dependents.



Referral	Address	Contact Info	Services
<b>STEP ONE</b> (Help to arrange first prenatal care appointment)	Phone and online access only (Interpretation Available)	614.721.0009 <a href="https://columbus.gov/Government/Mayors-Office/Initiatives/CelebrateOne/Safe-Sleep/Step-One-for-a-Healthy-Pregnancy">columbus.gov/Government/Mayors-Office/Initiatives/CelebrateOne/Safe-Sleep/Step-One-for-a-Healthy-Pregnancy</a>	Assists in making first appointment for prenatal care. See website for other healthy pregnancy resources.
<b>Wellness on Wheels</b> (OhioHealth Mobile Unit)	See web site for locations.	614.566.9989 <a href="https://ohiohealth.com/community-health/wellness-on-wheels">ohiohealth.com/community-health/wellness-on-wheels</a>	Mobile program is free. primary care, prenatal, postpartum, & women's health. Lab services, full panel STI testing & more. Interpretive services available. Call for appointments.
<b>Fairfield &amp; Franklin Counties</b>			
<b>Fairfield Healthcare Professionals</b> <b>OB/GYN Drs. Burnette, Keirns, Bolden, Jerig</b> <b>Midwife Joan Ray</b>	<a href="https://www.fairfieldhealthcare.com/locations/112-Ewing-St-Lancaster-OH-43130">112 Ewing St.</a> <a href="https://www.fairfieldhealthcare.com/locations/112-Ewing-St-Lancaster-OH-43130">Lancaster, OH 43130</a>	740.689.6690 <a href="https://www.fairfieldhealthcare.com/providers/emily-burnette/">fmchealth.org/providers/emily-burnette/</a>	The Fairfield Community Health Center team includes a women's health professional who understands women have unique health needs and meets the needs of women in the community.
<b>OB/GYN Associates of Lancaster -</b> <b>Drs. Barnhart, Froman, and Santino</b>	<a href="https://www.obgynassociatesoflancaster.com/locations/625-West-Waterloo-St-Suite-310-A-Canal-Winchester-OH-43110">625 West Waterloo St.</a> <a href="https://www.obgynassociatesoflancaster.com/locations/625-West-Waterloo-St-Suite-310-A-Canal-Winchester-OH-43110">Suite 310 A</a> <a href="https://www.obgynassociatesoflancaster.com/locations/625-West-Waterloo-St-Suite-310-A-Canal-Winchester-OH-43110">Canal Winchester, OH 43110</a>	740.653.5088 <a href="https://www.ohiohealth.com/ohiohealth-physician-group/our-specialties/obstetrics-and-gynecology/our-locations/canal-winchester/">https://www.ohiohealth.com/ohiohealth-physician-group/our-specialties/obstetrics-and-gynecology/our-locations/canal-winchester/</a>	Prenatal care in Lancaster and Canal Winchester but delivers at Ohio Health in Pickerington.
<b>Nationwide Children's Hospital</b> <b>Teen &amp; Pregnant Program</b>	Livingston Ambulatory Center: <a href="https://www.nationwidechildrens.org/locations/380-Butterfly-Gardens-Dr.-Columbus-OH-43215">380 Butterfly Gardens Dr., Columbus, OH 43215</a>  Linden Primary Care Center: <a href="https://www.nationwidechildrens.org/locations/1390-Cleveland-Ave.-Columbus-OH-43211">1390 Cleveland Ave., Columbus, OH 43211</a>	614.355.6350 Option 3 <a href="https://www.nationwidechildrens.org/specialties/teen-and-pregnant-program">nationwidechildrens.org/specialties/teen-and-pregnant-program</a>	Teen prenatal and postnatal care for pregnant women through age 21 ½ years old. Centering pregnancy program. Accepts insurance, Medicaid, sliding scale, HCAP, or financial assistance.